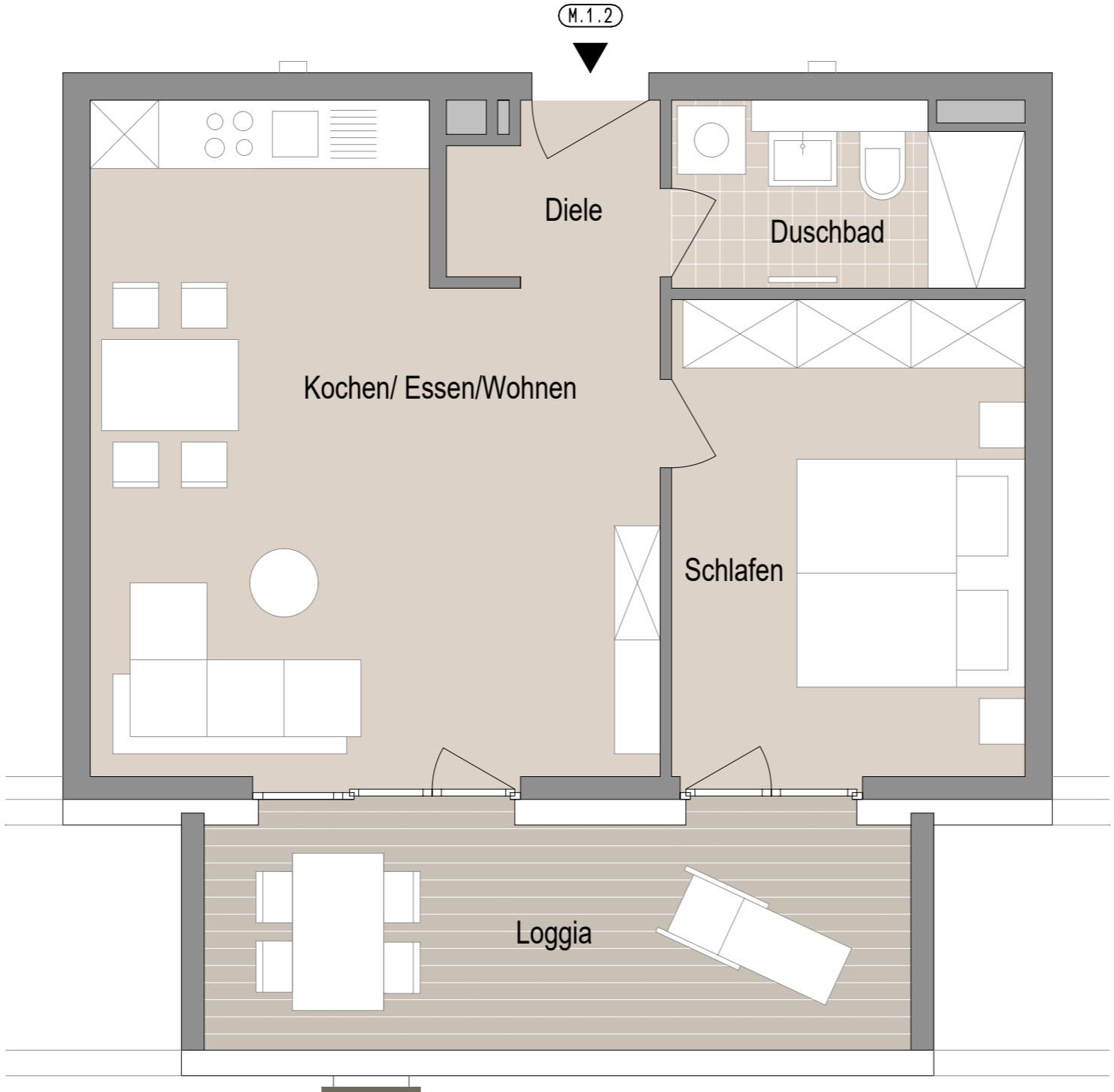


# Anlage 3



## STADTVILLA M

Wohnung M.1.2	OG1
Diele	2.8 m <sup>2</sup>
Kochen/ Essen/ Wohnen	26.4 m <sup>2</sup>
Schlafen	13.1 m <sup>2</sup>
Duschbad	4.8 m <sup>2</sup>
Loggia	(12.2 x 0.5) 6.1 m <sup>2</sup>
<b>Wohnfläche</b>	<b>ca. 53.2 m<sup>2</sup></b>

